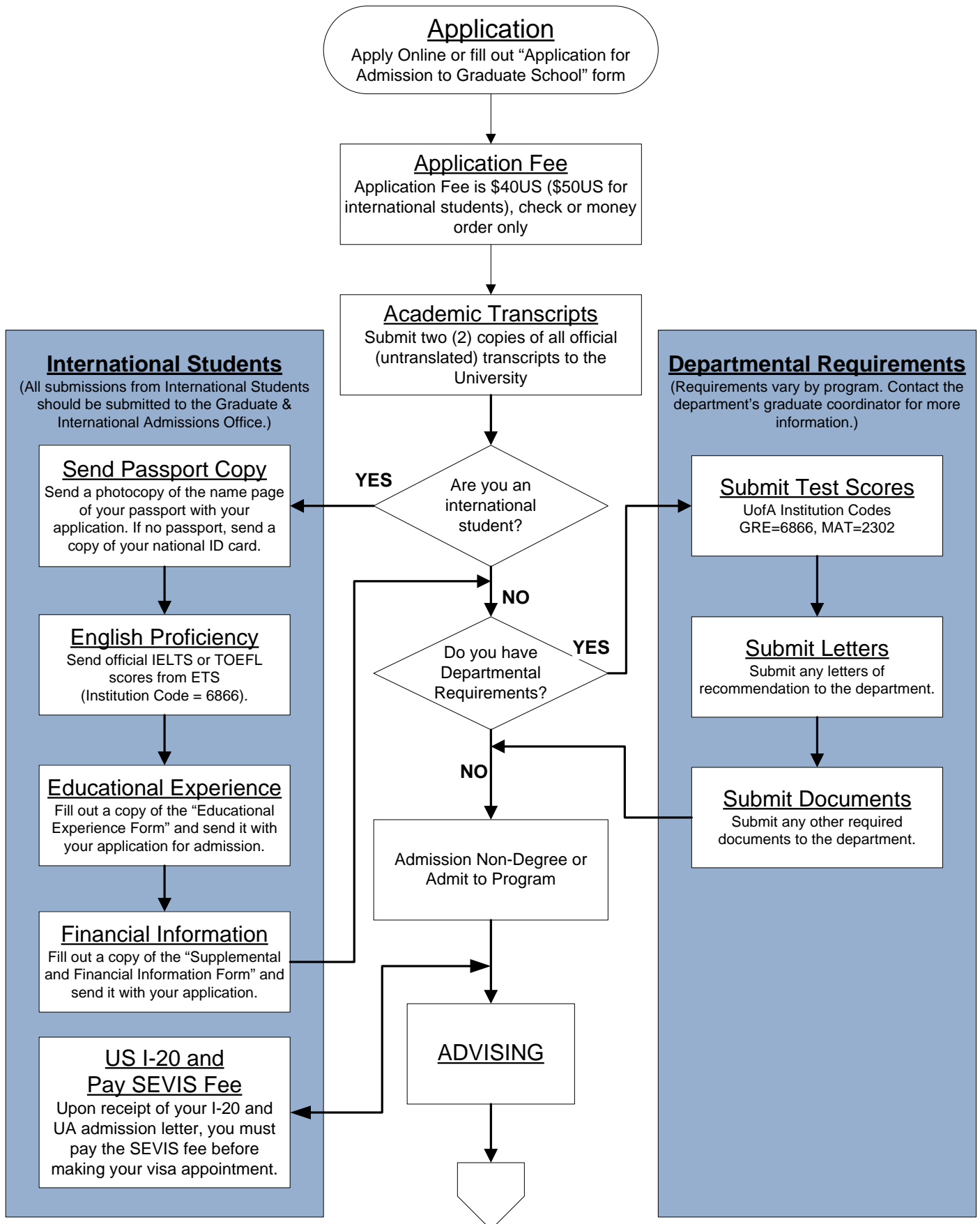


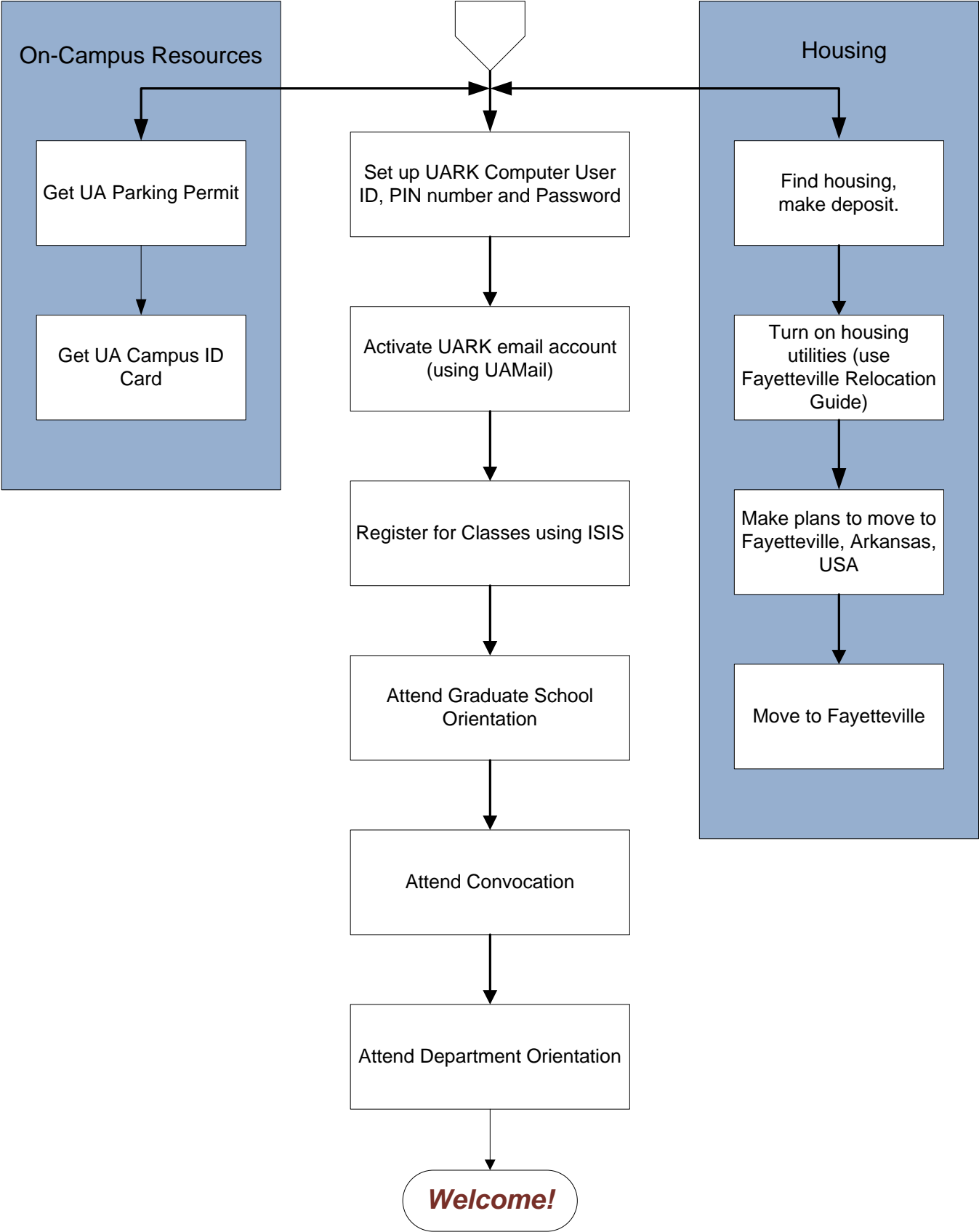
Flowchart for Admission and Enrollment

University of Arkansas Graduate School



Flowchart for Admission and Enrollment

University of Arkansas Graduate School



Flowchart for Admission and Enrollment

University of Arkansas Graduate School

Application Fee

Application fee is \$40.00. This fee will be valid if the applicant is admitted and enrolls within two calendar years from the semester of initial application. The fee is not transferable, not refundable for any reason, and not applicable to tuition or other fees. Please make check or money order payable to the University of Arkansas. We cannot accept cash or credit cards.

International Students Application Fee

The non-refundable application fee is \$50.00 US Dollars and must be in the form of a check or money order drawn on a U.S. bank and made payable to the University of Arkansas.

Domestic US Transcripts

You must send two (2) official transcripts directly to the UA Graduate School office from each college or university you have attended previously.

International Transcripts

Prospective students must submit two (2) copies of officially attested translated and untranslated academic records or mark sheets with degree confirmation. Copies must be attested by the appropriate academic official such as Registrar, Controller of Examinations, or Records Officer. Notarized copies or those attested by parties other than the appropriate officials are not accepted. Students still enrolled in their bachelor's degree programs must submit at least 6 semesters of a four-year (8-semester) program upon which to base an admission decision.

Degree Confirmation

Any student who has not yet received a bachelor's degree will be required to submit proof of degree conferral prior to being granted registration privileges. The student should submit official transcripts showing degree conferral directly to this office from the college or university where the degree was awarded.

Admission Non-degree or Admit to Program

The honor code must be signed and on file for every student before registration privileges will be allowed.

US I-20 and SEVIS Processing Fee

Persons applying for the F-1, J-1 type visas (student visas) must pay a one-time SEVIS processing fee, called the I-901 Fee. The SEVIS processing fee is USD \$200 for F1 visas, and USD \$180 for J1 visas. You will need to bring a receipt for payment of this fee to your visa interview. The fee can be paid by check or money order drawn on a U.S. bank or online through the website. Please visit the SEVIS fee website at www.fmjfee.com for details about the fee and instructions on paying it. For further information, see the [SEVP \(Student and Exchange Visitor Program\) main page](#). We encourage you to pay the fee as soon as you can to avoid delays in applying for a visa. This is a one-time fee and will be valid for whichever U.S. University you choose to enroll in (although we do hope you choose to join the University of Arkansas!!)

Flowchart for Admission and Enrollment

University of Arkansas Graduate School

Set up UARK User ID, PIN and password

[PASSWEB](#) is the online facility for resetting various host passwords including mail/comp, cavern, dial-up, warehouse, MMRC, enterprise, ADMIN, and Meeting Maker. Personal Identification Numbers (PINs) are issued to all students, faculty, and staff for the purpose of accessing some web-based applications such as UARK username pick-up and PASSWEB.

Activate UARK Email (Check email at “XpressMail”)

Once you have set up your user ID, PIN and password, you can check your email at UARK [XpressMail](#). Go to UA home page, and at bottom of page choose either the “[XpressMail](#)” or “[UAMail](#)” link in the area shown on the graphic to the right.

Parking Permit

You may want to get a one-day permit just for Orientation or you may want to get an annual permit to park on campus. Go to this web site for that information:
<http://www.uark.edu/depts/parking/>.

Advising

If you are admitted to a program you must be advised by your department before you can register for classes. The department will remove an ISIS advising hold from your ISIS record so that you can register. If you are admitted as non-degree seeking, advising is not required.

Registering for Classes

Access the ISIS student information system at <http://isis.uark.edu> on the web.
You can find instructions for registration at <http://www.uark.edu/isis>

Graduate Student Orientation

RSVP for New Graduate Student Orientation! Go to this web page to register for Orientation:
<http://www.uark.edu/depts/gradinfo/recruit/orientation/index.html>

Attend Orientation on Wednesday, August 16, 2006 and Convocation on Sunday, August 20, 2006. Your department may also host a departmental orientation. Check with your department for specifics.

Finding Housing

The UA hosts a housing search database where you can look for housing, and look for a roommate. Access it at this link: <http://offcampushousing.uark.edu/>

Also, your department may have a bulletin board for new graduate students looking for roommates and/or housing, so check with them as well.

After you have found housing you'll want to get your cable, gas, water, etc. hooked up. Use the handy Fayetteville Relocation guide for this. You'll find it at this link:

Now the fun part: pack, say goodbye and move to Fayetteville! We look forward to welcoming you to the Graduate School at New Graduate Student Orientation.